

Lauper Hausmesse Murten 5th-7th of September 2023

By Pierre Meyer
Sales Director Dach Region

Who we are



TELEDYNE GAS AND FLAME DETECTION
Everywhereyoulook™



TELEDYNE OLDHAM SIMTRONICS
Everywhereyoulook™



TELEDYNE DETCON
Everywhereyoulook™



TELEDYNE GAS MEASUREMENT INSTRUMENTS
Everywhereyoulook™



TELEDYNE
GAS AND FLAME DETECTION
Everywhereyoulook™

Protecting lives, that's our business.

For companies that demand the most reliable gas and flame detection solutions, Teledyne offers more than 100 years of proven experience in industries as diverse as oil & gas, food & beverage, marine and public utilities. Always sensing safety, everywhere you look, Teledyne's global portfolio of products and safety solutions are unquestionably first-in-class

Every customer scenario demands a different, customized approach, and Teledyne applies expertise in building the right plan for the right hazards every time. Our complete portfolio and industry-leading solutions offer expert perspective and quality products you can rely on in the most critical situations. When it comes to superior value, efficacy, efficiency and service, the gas and flame detection team from Teledyne delivers like no one else.

[Over 20 years Collaboration with Partner Lauper Instruments in Switzerland.](#)

Our Global presence

- Sales
- Manufacturing
- Service
- Product & Marketing
- Training



Our brands notoriety on the market (EMEA & Asia)



- N°1 brand in France for Gas Detection
- Well known all over Europe, CIS countries, Africa, and Asia
- Known in Middle East in the commercial applications (kitchens)
- General purpose equipment (gas detectors, stand alone monitors and controllers)
- High End products (gas detectors, flame detectors, controllers, analyzers) , especially for the Oil& Gas, Nuclear and Defense industries
- Strong sales and service coverage in Europe & Africa



- N°1 brand in the UK for portable Gas Detection (Utilities)
- Well known all over Europe,
- Low but growing M/S in the Middle East
- Portable Gas detectors for Utilities («Bricks») and portable gas detectors for Industrial Safety
- Strong sales and service coverage in Europe



- Well known in the Middle East, CIS countries and Asia
- Was not known in Europe/Africa for lack of sales people and certification
- High End products(gas detectors and controllers), especially for the Oil& Gas industries
- Strong in Wireless solutions

Pharmaceutical
Industry



Thermal & Nuclear Power
Station



Natural Gas & LPG



Boiler rooms



Marine



Steel



Food & Beverage



Parking &



Petrochemical



Freezing



Water



Brewing



Automotive



HC Refineries & Storage Aviation



And many more...

The most extensive range on the market

Point Infrared LEL & CO2 Detection



Toxic & Catalytic LEL Detection



Wireless & Perimeter Monitoring



Universal gas detector



Portable gas detection and measurement



Open Path LEL & Toxic Detection



Flame detection



Control Solutions



Fire & gas systems



Portable & Stand alone monitor



Fixed Gas Detectors

OLCT 100



CPS 10



CTX 300



OLCT 100



DG Series



OLCT 80



OLCT 60



OLCT 710



700 Series



iTrans 2



Spyglass



Meridian



GD 10



GD1



Flame Detectors

DF Series IR3 & UV/2IR



Series 40
UV & UV/IR

IP23 &

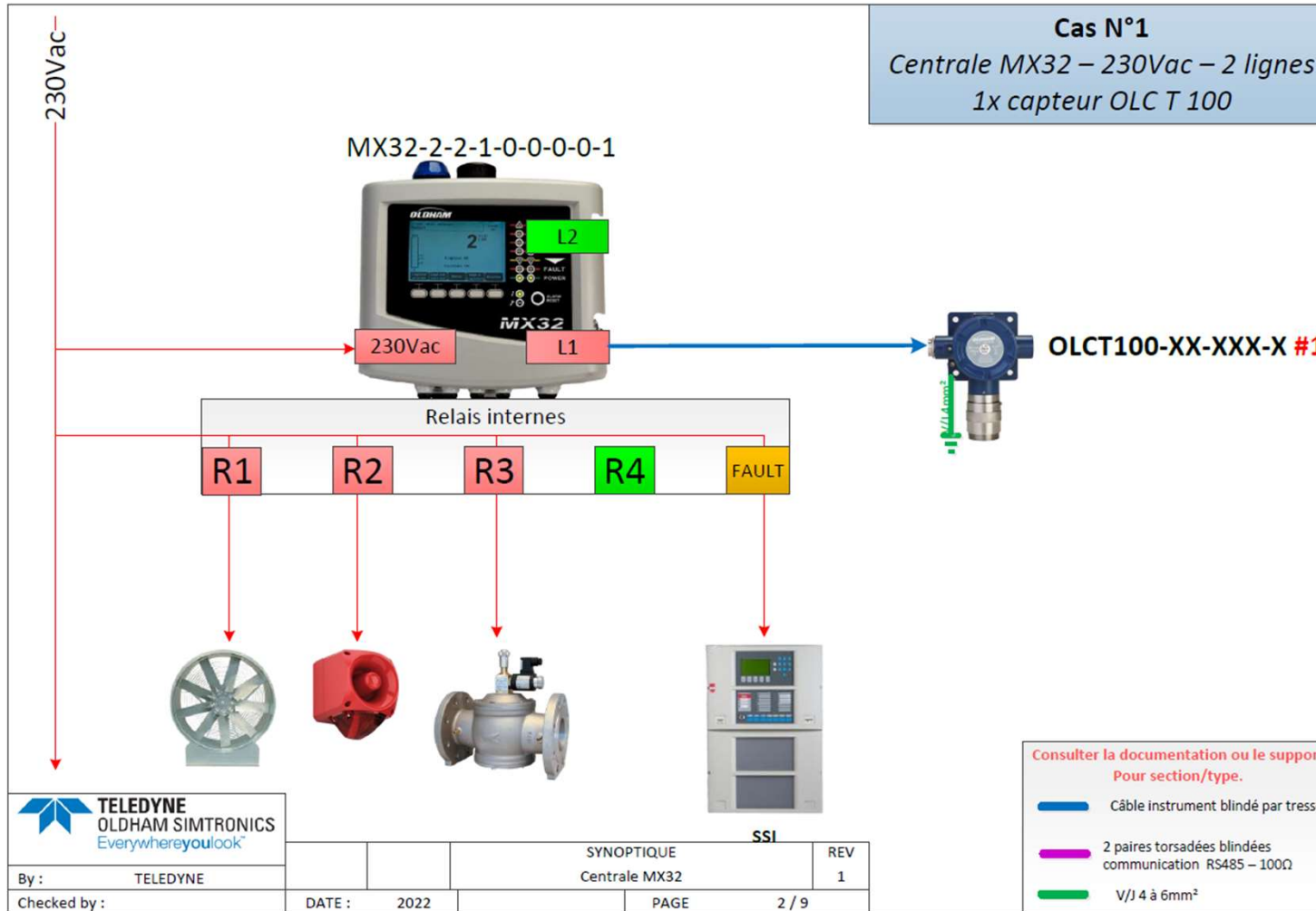


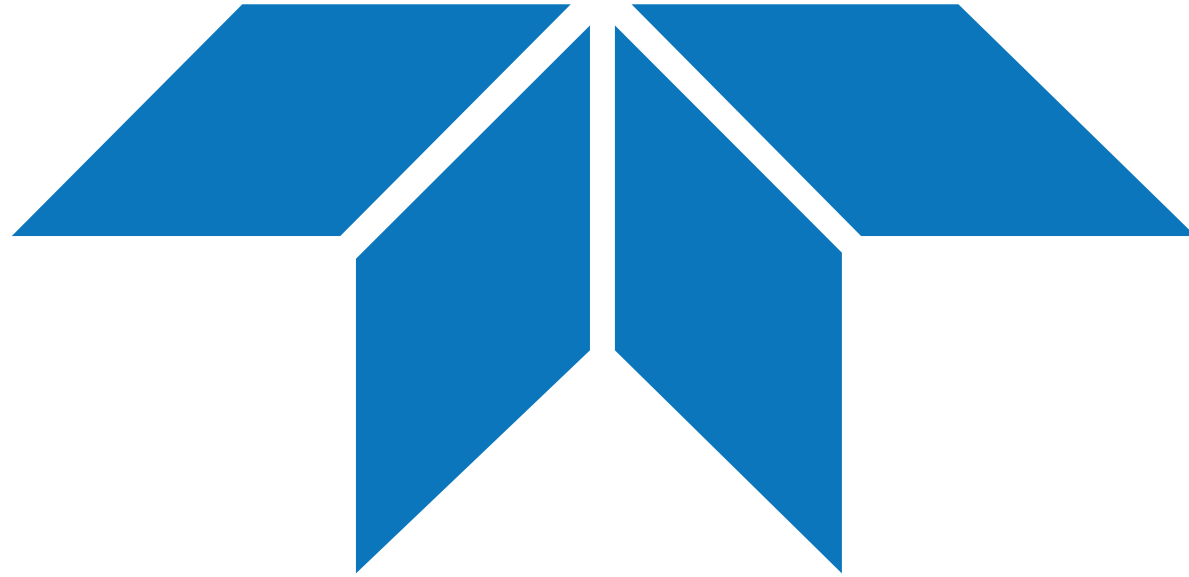
Teledyne Gas & Flame Detection

Highest Reliability IR Detection



Example of Configuration





Highest Reliability IR Detection

GD10P



The GD10P has been designed to provide an effective response to the detection of gas hazards in a wide range of industrial environments

Unique infrared gas detectors that utilize silicone based solid-state infrared sources.

Complete optomechanical design and construction provides stability for achieving an ultra fast speed of response and providing unparalleled service life and detector stability, thus saving on maintenance and service costs.

Available calibration for Methane Gas, CO2 or any of 16 other combustible gases.

Video of GD10P

<https://youtu.be/mpu8AZqrHCQ?si=ymPWuF1wni4Gpdub>

GD10P

Highest Reliability IR Detection

- Durable, accurate, fast
- Provides for continuous monitoring & accounts for environmental changes and device drift
- Maintains highest accuracy of detection for the life of the unit
- No recalibration required
- Monitors & accounts for all changes in optical path
- Early dirty optics warnings



GD10P Specifications Overview

- Gases Detected: Acetylene, Benzene, Carbon Dioxide, Cyclohexane, Ethanol, Ethylene, Hexane, Methane, Methane (Biogas), Methanol, n-Butane, Pentane, Propane, Propene, Styrene, Toluene
- Detection Method: IR- absorption, dual wavelength, dual path
- IR-Source: Solid state IR source, 50Hz flash
- Dimensions: 264 mm L x 104 mm W x 106 mm H (10.4" x 4.1" x 4.2")
- Weight: Approx. 2.9kg (6.4 lbs.)
- Standard Output Signal: Current source 4-20 mA, max. load impedance 500 Ohm
- Housing Material: Stainless steel SIS2343 (ASTM 316)
- Operating Temperature Range: -40°C to +65°C (-40°F to +149°F)
- Storage Temperature Range: -40°C to +70°C (-40°F to +158°F)
- Operating Humidity Range: 100% RH
- Ingress: IP66/ IP67 DIN 40050
- Power Supply: 24 V DC, range 18-32 V DC
- Power Consumption: Approx. 3.5W



GD10P Keys Points

- Quick response to detected gases.
- Fastest IR point detector on the market
- High IR source flash rate for improved stability & speed of response.
- Superior long-term performance compared to filament lamps
- Allows for the tuning out of minor or short duration detection events, in applications where there could be minor leaks
 - Resulting in lower nuisance alarms
- Ideal for speed critical applications
- Over 20 years LifeSpan, first one's in service 1990 still running
- Great may Best Cost of ownership ration in the market.



GD10P More Detailed



GD10P

Unmatched Optical Stability Eliminates Field Calibration

- Dual wavelength, dual path, solid state IR source
- Extremely stable output, does not degrade like a filament
- 5 year warranty on GD10P, 15 year warranty on IR sources
- Typical life span +20 years (in service since 1990)
- Three factory calibrated temperature curves: -30°C , $+20^{\circ}\text{C}$ & $+55^{\circ}\text{C}$ give high temperature stability
- All optics mounted on a single metal platform
- Individual measurement, reference sources, and detectors
- High mechanical stability
- Monitors and compensates for changes to the optical path



GD10P

Durability

- Independently heated mirror and lens
- Low power consumption reduces load on power supply or UPS
- High performance in rough environmental conditions
- Integral termination compartment for improved preventative maintenance
- Dual layer weather protector easily removed for cleaning
- Sapphire lenses



GD10P

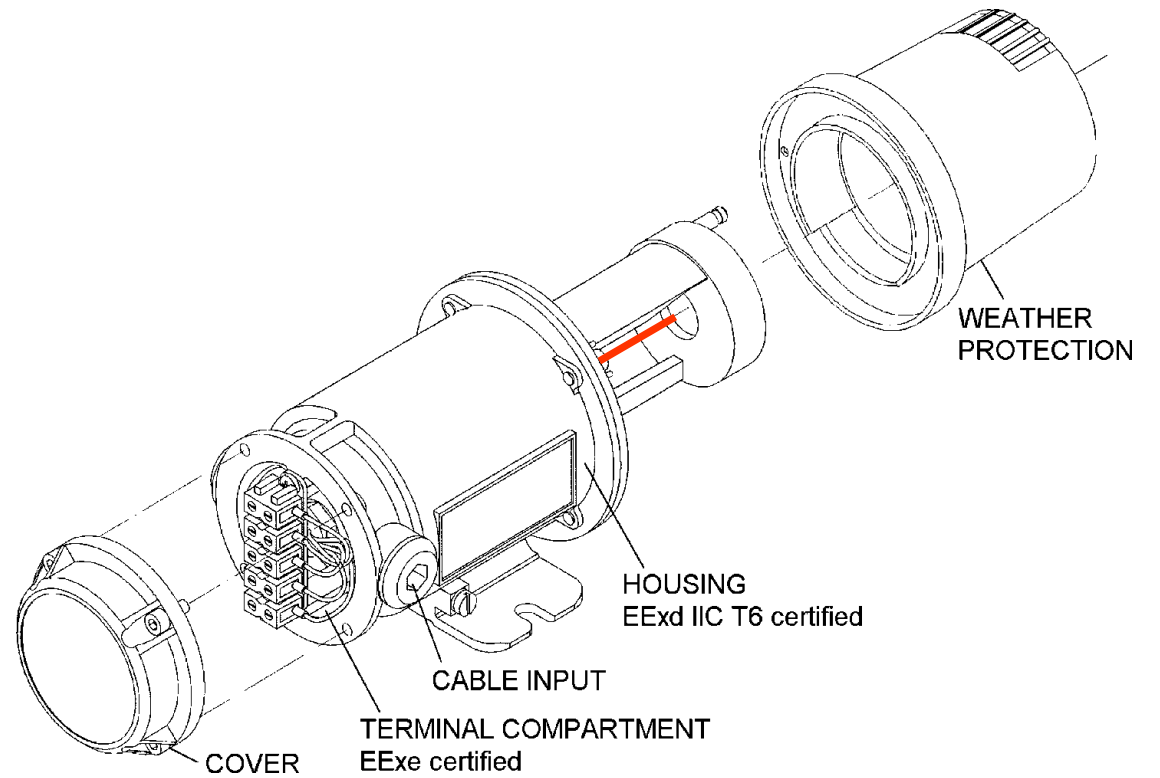
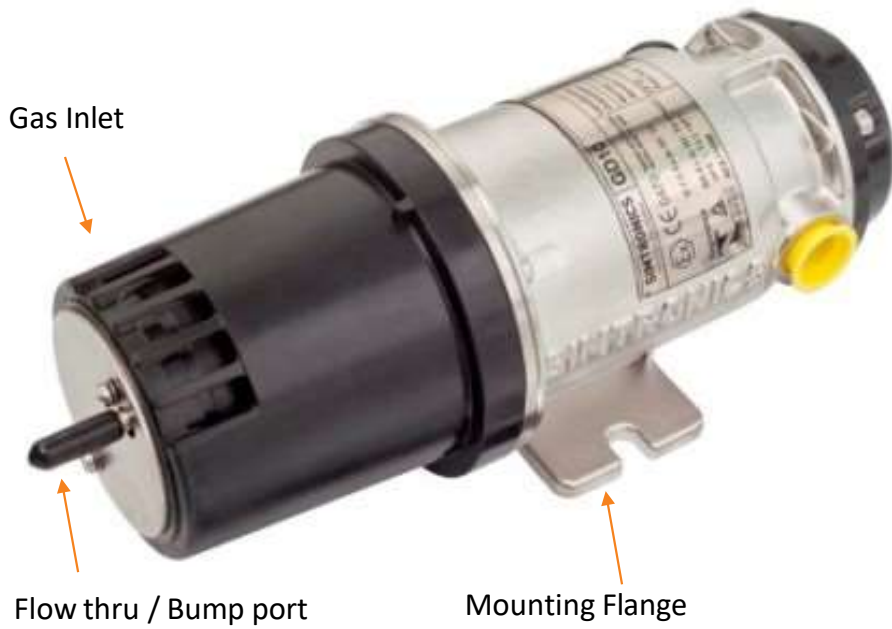
Quick Response

- Quick response to detected gases
- Fastest IR point detector on the market
- Ideal for speed critical applications
- High IR source flash rate for improved stability & speed of response.
- Superior long term performance compared to filament lamps
- Allows for the tuning out of minor or short duration detection events, in applications where there could be minor leaks
- Lower nuisance alarms



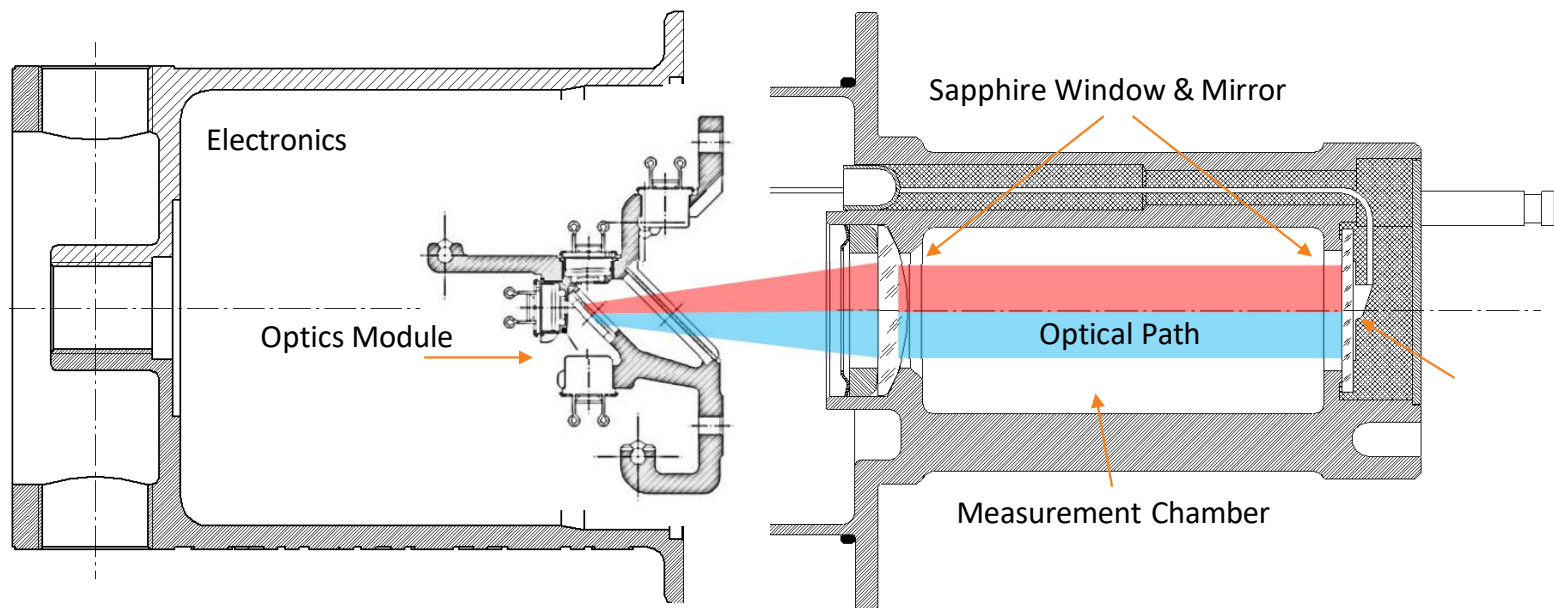
GD10P

Components



GD10P

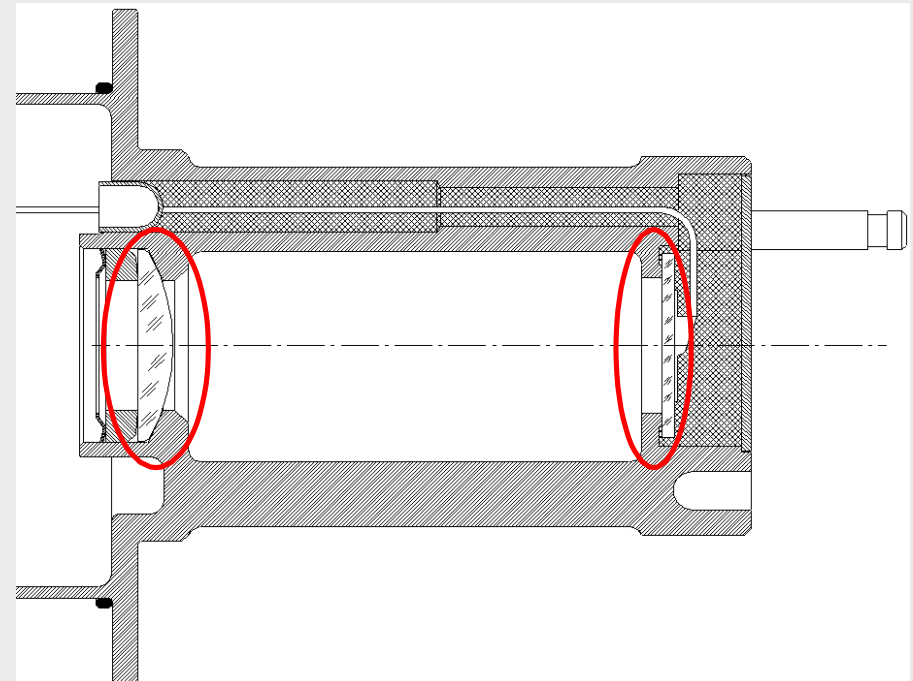
Components



GD10P

Components

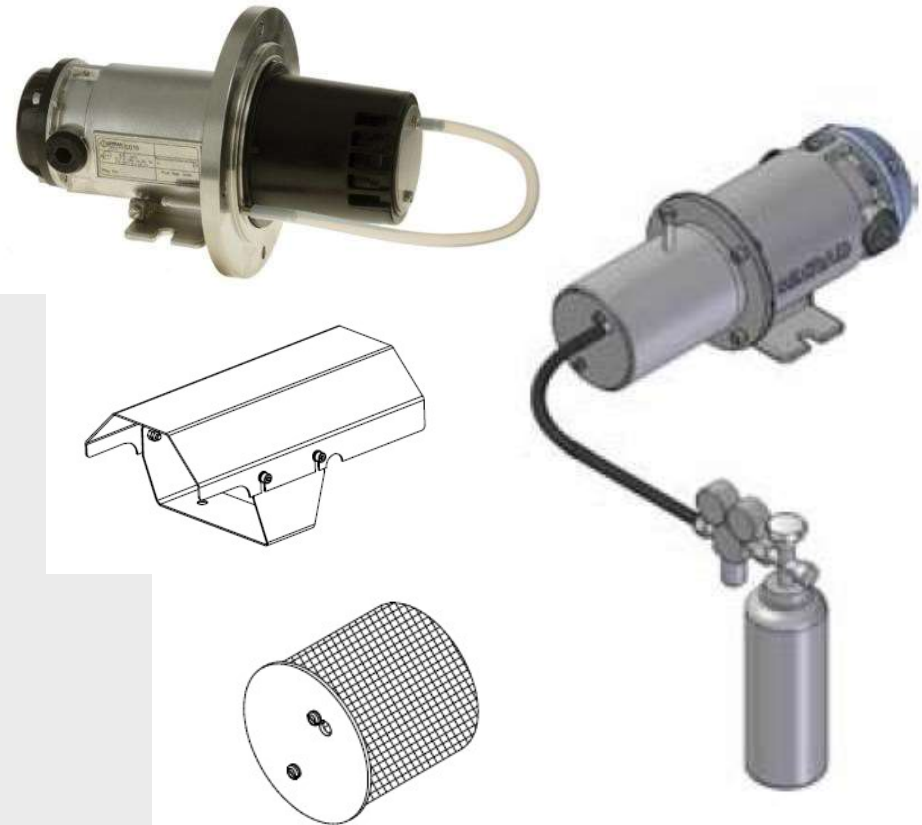
- Sapphire lens and mirror covering
- Extremely durable
- Only diamonds are harder
- Independently heated lens and mirror
- Inhibits optics path fogging
- Early optics contamination warning
- Open design
 - Allows easy cleaning
 - Allows drainage from weather / washdown



GD10P

Accessories

- Duct Mount Flange
- Flow Thru / Bump Test housing
- Mosquito Mesh
- Sun Shield (2) Standard & vertical mounting
- Pipe Mounting Adaptor



GD10P

Target Markets & Applications

FPSO/ FSO/ MOPU
Marine/ Jack up Rigs
Oil & Gas Offshore Drilling Rigs
Chemical and Petrochemical Plants
Waste Disposal
Gas Turbines
General Industry

Manufacturing Video
[Manufacturing InfraRed Gas Detector -
GD10 Line - YouTube](#)



Simtronics GD10P

Optional Display

- Comes in two varieties
 - 4-20mA loop powered
 - GD10P-Display-Alu-CSA
 - GD10P-Display-SS-CSA
 - With 2 relays & 4-20mA retransmission
 - 8080RR-A-07-E1-MM-00 (Aluminum)
 - 8080RR-T-07-E1-MM-00 (Stainless Steel)
- Epoxy coated aluminum or stainless steel
- Class I, Division 1, Groups B, C, D
- 4 digit LED display



GD10PE

Extended Pathlength

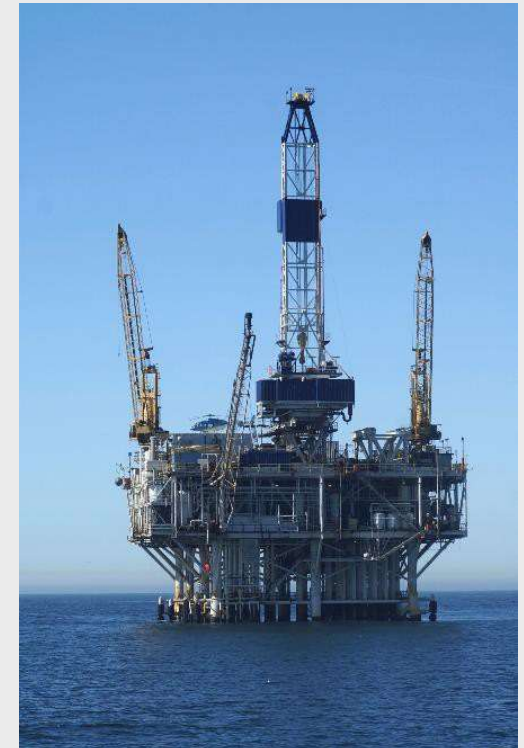
- Lower Measuring Ranges:
 - 0-20 %LEL methane
 - 0-5000 ppm ethylene
- Designed for Ventilation / Exhaust Ducts
- Extended Temperature Range 85 C / 185 F
- Probe Length: 653.5 mm / 2.14 ft / 25.73 in



GD10P

Target Markets

- Speed of response is critical
- Minimal maintenance is ideal
- Harsh environmental conditions are present
- Process is fouling traditional gas detection
- Calibration gas is difficult to obtain



GD10P

Applications

- Any Rugged, Difficult, or Low Maintenance Area
 - FPSO/ FSO/ MOPU
 - Marine/ Jack up rigs
 - Oil & Gas offshore drilling rigs
 - Chemical and petrochemical plants
 - Waste disposal
 - Gas turbines
 - Natural gas pipeline compressor stations
 - Plant oil extraction (soybean, etc.)



Fragen ???



TELEDYNE
GAS AND FLAME DETECTION
Everywhereyoulook™