



## References:



Typical specifications subject to changes without prior notice

| Required configuration and technical specifications: |  | Optional modules: |  |
|--|--|-------------------|--|
| Operating systems                                    | Windows, Linux   | XR SPC            | Control charts management  |
| Workstation  | Windows  | XR DATAEX-Impact  | Generation of information files adapted to the atmospheric dispersion models |
| Architecture   | Multi users and multi workstations                     | XR Web            | Web access to data and information broadcast                                 |
| Languages  | French, English, Spanish, other languages upon request | XR CMMS           | Computerized Maintenance Management System                                   |

**Number of workstations:** unlimited, according to the type of license



**Lauper Instruments AG**  
 Irisweg 16 B  
 CH-3280 Murten  
 Tel. +41 26 672 30 50  
 info@lauper-instruments.ch  
 www.lauper-instruments.ch



## ... | Air quality monitoring software



### EXCLUSIVE FEATURES:

#### Compliance with:

- ISO 7168
- AFNOR NF X 06-044 norm
- European Directive 2008/50/CE

- Acquisition, processing and display of any type of environmental data: gas and dust analysers, meteorological sensors, samplers, ...
- Advanced tools for statistics, validation and reports
- Advanced control of the measurement chain
- Exclusive system of automatic data validation
- Input and import of analysis results
- Traceability and high availability of the raw and validated data



**Data acquisition:**

- Data acquisition from analyzers and other devices via digital or analog links
- Calculations (scaling, adjustment, linearization, normalization); aggregation of the resulting data on various time period to determine averages
- Management of failures, thresholds overruns and alarms

**Data management:**

- Automatic sending of an email, SMS, fax, etc. on failures or thresholds overruns
- Communication management between the software and the data acquisition systems
- Assignment of a quality code for raw and mean data (e.g. maintenance, calibration, drift, alert, failures...)

**Supervision:**

- System status display (failures, alarms, thresholds overruns)
- Multi-window display (slideshow)
- Data display: raw, means, trends,...
- Supervision of configured parameters, remote monitoring of analyzers
- Real-time data follow-up, interactive set-up, calibration and automatic results monitoring, remote testing

**Report management:**

- Import of laboratory data, automatic or manual data export in various file formats: Excel, XML, HTML, PDF, CSV
- Automatic edition of compliant and customized reports according to local authorities' requirements

**Data validation:**

- Tables and/or charts data display
- Several validation levels with different level rights and logging
- Actions traceability (data validation, invalidation, adjustment)
- Quality codes for the data (maintenance, calibration, drift, alerts, failures...)
- Automatic statistical analysis on previous pollution episode



**XR Software**

- Database management
- Backup management
- Local or remote communication
- Message sending...

**XR WorkStation**

- Supervision
- Settings (alarms, trends, measurements,...)
- User profiles management
- Data display
- Reports...

**System management and security:**

- Database: size control, automatic back-up, data archiving, cleaning and restoring
- Detailed management of access rights for different user profiles. System logon via identification
- Logging of any actions either carried out by the users or automatically operated by the software
- Automatic U.P.S. management in case of power failure
- Reporting on system operations (failures, communication status, etc.)

**Automatic data validation:**

- Automatic data validation in real time
- Set of customizable data validation rules
- Backup of the automatically validated data until final inspection
- Traceability of the automatically validation actions

**Data control and quality assurance – optional:**

- Control charts management
- Automatic management of calibration charts
- Automatic analysis and results checking
- Three different control charts available simultaneously and automatically for each analyzer : CUSUM (NFX06-031-4), EWMA (NFX06-031-3) and Shewart (ISO 8258)
- Graphical display of monitor calibrations and historical data

**Maintenance planning and management - optional:**

- Schedule and track of maintenance tasks adapted to the Air Quality Monitoring Networks
- Automatic generation of working orders and on-site interventions follow-up
- Spare parts stock management

**Data display on the web with the XR Web module - optional:**

- Software suite for interactive data display on the web (maps, tables, charts)
- Data export to existing web sites



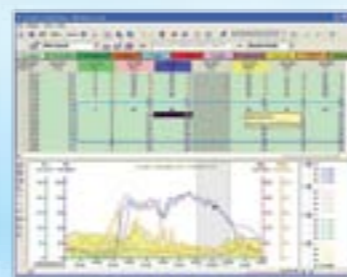
Data acquisition and multi-window display of parameters in real-time



On-map interactive display of the monitoring stations



Computerized maintenance Management module adapted to the Air Quality Monitoring Networks



Data validation module



Customizable reports management, automatic or manual editing



Control charts