



Quick, Easy, Accurate On-Site Performance



HAPSITE[®] ER

Chemical Identification System

The Only Person-Portable GC/MS That Identifies VOCs and SVOCs

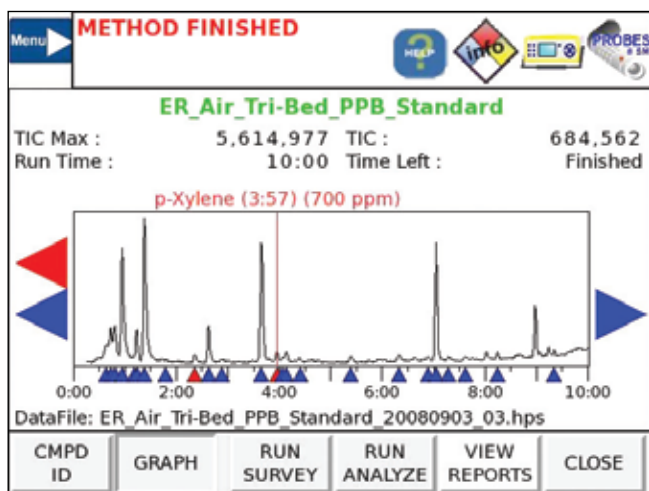
SIMPLE OPERATION FOR SOPHISTICATED ANALYSIS

The new HAPSITE ER is the only person-portable Gas Chromatograph/Mass Spectrometer (GC/MS) that requires minimal training to deliver qualitative and quantitative lab-quality results—in the field, in less than 10 minutes.

In fact, all the operator has to do is push a button to begin identifying and quantifying volatile organic compounds (VOCs), toxic industrial chemicals (TICs), toxic industrial materials (TIMs), chemical warfare agents (CWAs), and select semi-volatile organic compounds (SVOCs).



HAPSITE ER has the capability to identify analytes in the PPM (parts per million) – PPT (parts per trillion) range. The GC column provides sharp chromatography and excellent resolution. During the quantitation method, the front panel clearly displays what chemicals are present, their concentration, and access to information regarding the degree of danger — to help make quick decisions affecting life, health and safety.



HAPSITE ER delivers qualitative and quantitative lab-quality results in less than 10 minutes.

FEATURES AT A GLANCE

- Fast, confirmatory results in the field directly comparable to laboratory GC/MS data
- Universal interface allows for accessory expansion without a hardware change to HAPSITE
- Simple operation for even basic skill levels with minimal training
- Visual confirmation of correct probe placement for optimum sample collection
- Clear, color indicators of sample identity and level of danger
- Pre-programmed methods to obtain quality data in minutes with a few simple keystrokes
- Bright, graphical display of chromatograms, spectra, and instrument status for easy viewing
- Built-in GPS records exact sampling location for legally defensible data

APPLICATIONS

- Environmental assessment
- Chemical monitoring
- Emergency response

ENSURES OPTIMAL DISTANCE FOR THE MOST ADVANTAGEOUS SAMPLE COLLECTION

A visual indicator guides the critical process of probe location. This feature prevents the user from drawing too much sample into the instrument—causing saturation and inconclusive results. To accomplish this, HAPSITE ER employs a probe distance indicator that delivers visual feedback for the probe's optimal placement relative to the spill, drum, or other point source.

It's simple. When using Survey mode (MS only), the bar turns green when the user is drawing sample at the proper distance. Then, a push of the "RUN ANALYZE" button transitions the unit directly into GC/MS sampling mode. This ensures that sampling is done correctly, regardless of operator skill level or education.

HAPSITE ER DELIVERS SIMPLE ANALYSIS IN SECONDS AND DETAILED RESULTS IN MINUTES

HAPSITE ER uses a concentrator only for both low-level and high-level sampling. This reduces the time lost from manually changing sampling configurations for desired detection limits.

HAPSITE ER delivers vital information immediately. Use it in Survey mode for initial sampling to pinpoint chemical hazards with sensitivity down to 1 PPM. With one touch sampling, you can quickly and easily switch to full GC/MS mode for low-level detection (PPM/PPB range) and identification.

PRECISION SAMPLE COLLECTION ENSURES EXCELLENT REPRODUCIBILITY

A unique volume sample collection allows for portability of calibration curves, which is particularly useful when chemical exposure to multiple HAPSITES is a concern. The software measures the sample flow rate and fills to a fixed volume, ensuring consistent results, even if environmental factors affect the flow rate of sample collection.

Menu		METHOD FINISHED	
ER_Air_Tri-Bed_PPB_Standard			
TIC Max :	5,614,977	TIC :	684,562
Run Time :	10:00	Time Left :	Finished
1: Toluene	RT: 2:21		
CAS#: 108-88-3	FIT: 88.0%	CONC: 600.0 ppm	
2: p-Xylene	RT: 3:57		
CAS#: 106-42-3	FIT: 93.0%	CONC: 700.0 ppm	
2: Ethanol, 2-fluoro-	RT: 0:38		
CAS#: 371-62-0	FIT: 70.0%		
2: Acetone	RT: 0:43		
CAS#: 67-64-1	FIT: 79.0%		
DataFile: ER_Air_Tri-Bed_PPB_Standard_20080903_03.hps			
CMPD ID	GRAPH	RUN SURVEY	RUN ANALYZE
		VIEW REPORTS	CLOSE

The highlighted chemicals are linked to the on-board NIOSH database for actionable information that can be used to quickly assess danger level.

Menu		SYSTEM IS READY	
BATTERY	96%	Carrier	65%
Int Std	94%	HEATERS	100%
TUNE STATUS	OK	GPS	43.09N 76.06W
HAPSITE SYSTEM	100%		
Column	61.2 / 60.0	Membrane	59.7 / 60.0
GCHL	70.0 / 70.0	ValveOven	70.1 / 70.0
NEG	400.0 / 400.0	Probe	38.2 / 40.0
ConcElbow	69.4 / 70.0		
HEATERS	NEG	CONC	CLOSE

On-screen icons show at a glance the status of the HAPSITE ER systems. Touch any icon for system information.

A FULL RANGE OF ACCESSORIES FOR APPLICATION-SPECIFIC PERFORMANCE



HAPSITE HeadSpace Sampling System—for highly accurate on-site analysis of VOCs in water, soil, and solids, with detection limits into PPT range.



HAPSITE SituProbe—for lab-quality water analysis through a modified purge and trap system. Use it to analyze individual samples for continuous stream analysis, with detection limits into PPT range.



Service Module—allows for general maintenance and can be used as an alternate source of vacuum during stationary operation.

FAST, CLEAR WARNING OF PRESENT DANGER

Touch screen function provides quick access to critical information about the potential dangers of various compounds. Large buttons and color coding make it easy to operate, even when outfitted in personal protective equipment (PPE).

Critical safety information can't come too quickly, and HAPSITE ER is as fast as it gets. Touch screen navigation of the system quickly identifies various compounds and concentrations, and displays them in color according to their relative hazard level, including IDLH (Immediately Dangerous to Life or Health). HAPSITE ER displays not only the chemical name, but also information about the

chemical and an indicator of the level of toxicity and interpreted danger level.

MINIMAL TRAINING PRODUCES OPTIMUM RESULTS

An instructional CD, and a series of one-day courses are all anyone needs to operate HAPSITE ER like a seasoned chemist.

The training CD will provide everything the operator needs for front panel operation. The CD can be used as a refresher tool or an instructional guide for new users. In depth data interpretation proficiency can be achieved by taking additional Smart IQ courses.

SPECIFICATIONS

Operating Temperature	5°C to 45°C
L x W x H	18" x 17" x 7" (46 cm x 43 cm x 18 cm)
Weight	Approximately 42 lbs (19 kg) with battery
Power Supply	Rechargeable NiMH battery pack or AC converter
Battery Life	2 – 3 hrs
Power Requirement	24 V(dc), 30 watts at normal operating conditions
Hard Drive	16 GB internal storage
Flash Drive	USB
Display	6.5" VGA color display with touch screen
Sample Introduction	Air probe (included) or optional accessory
Carrier Gas	Nitrogen
Data System	Intel® Pentium® processor
Communication	802.11G wireless or direct Ethernet connection
Data Analysis	AMDIS Mass Spectral Libraries, NIOSH, (NIST on optional laptop)
Sample Type	VOCs and select SVOCs
Detection Limit	PPT for most analytes

MASS SPECTROMETER

Mass Range	41-300 AMU (1-300 AMU using SIM)
Scan Rate	1000 AMU/sec @ 10 points per AMU
Ionization Mode	70 eV Electron Impact
Detector	Electron multiplier
Vacuum System	Non-evaporative getter (NEG) pump
Dynamic Range	7 decades

GAS CHROMATOGRAPH

GC Column	15 M, Rtx-1MS, 0.25 mm i.d., 1.0 um df (included)
Temperature Range	45°C-200°C

DETECT TO PROTECT™

 **INFICON** Opening The Field To New Ideas®



LAUPER Instruments AG
Irisweg 16 B, CH-3280 Murten Tel. 026 672 30 50 Fax. 026 672 30 59
info@lauper-instruments.ch www.lauper-instruments.ch