

PERMEATION ANALYZERS

OPTIONAL ACCESSORIES

Get more from your MOCON® Permeation Analyzers with these optional accessories.

Testing Cartridges for Films

Increase the utility and efficiency of your MOCON analyzer with these interchangeable, removable test cartridges including some application specific designs for traditionally hard-to-test samples.

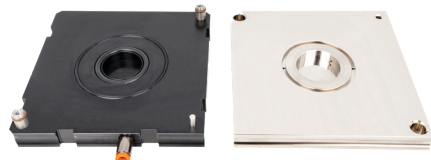
Standard 50cm² Film Test Cartridge

- Easy to prepare and mount samples on workbench
- Interchangeable between OTR & WVTR for precisely controlled RH testing
- Optional 100% RH testing version for WVTR
- Truseal® flush ring at the perimeter ensures a leak-free seal every time increasing accuracy and repeatability
- Extra cartridges allow staging of samples to increase lab throughput



Reduced Area 5.64 cm² Film Test Cartridge

- Extends upper detection level of unit by a factor of 9
- Eliminates cost and labor of using aluminum foil masks
- No adhesive compatibility issue, more accurate
- Reusable, better repeatability than using foil masks
- Sample is reusable, not damaged by adhesive
- Interchangeable between OTR & WVTR for precisely controlled RH testing
- Optional 100% RH testing version for WVTR
- Truseal flush ring at the perimeter ensures a leak-free seal every time increasing accuracy and repeatability



Edge Effect Film Test Cartridge

- Unique "Dam" design seals the edge of the sample from ambient air or moisture
- Allows accurate testing of barriers with inherent leakage through the edge or "cross section" such as paper-based products
- Interchangeable between OTR & WVTR for precisely controlled RH testing
- Optional 100% RH testing version for WVTR
- Sample test area 50 cm

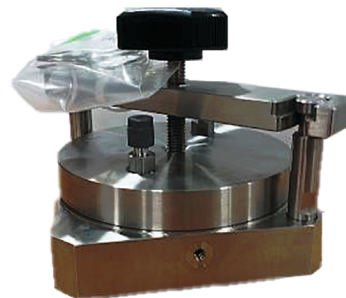


PERMEATION ANALYZERS - OPTIONAL ACCESSORIES

Testing Cartridges for Films

High Temperature Film Test Cartridge

- Remote film test cell for use in environmental chambers
- Allows testing at higher temperatures
- Central clamping point provides accuracy and repeatability
- Interchangeable between OTR & WVTR for precisely controlled RH testing
- Optional 100% RH testing version for WVTR
- Sample test area 50 cm²



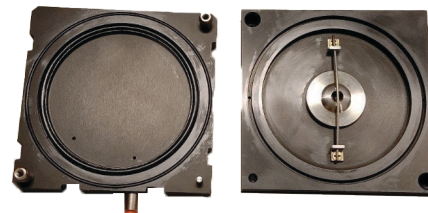
Remote Testing Cartridge Adapter

- Cartridge adapter fits into modified drawer allowing testing with remote film test cell or package testing fixtures
- Enlarged adapter extends connection fitting beyond drawer for easy access without opening drawer
- Kit includes modified drawer and gate to fill opening when using regular film cartridges



Contact Lens Test Cartridge

- Special test cartridge designed to hold contact lenses
- Sponges allow 100% RH testing environment
- Allows accurate and repeatable gas permeation testing of contact lens



Cartridge Name	Precise RH	100% RH
Standard 50 cm ² Film Test Cartridge	051-810	052-045
Reduced Area 5.64 cm ² Film Test Cartridge	052-122 ea, 052-405 Pair	052-130 ea, 052-404 Pair
Edge Effect Film Test Cartridge	052-179 ea, 052-339 Pair	052-186 ea, 052-340 Pair
High Temperature Film Test Cell	051-585 (Open bottom)	050-655 (Closed bottom)
Remote Testing Cartridge Adapter Kit	054-030	-
Contact Lens Test Cartridge	-	052-505
Instrument Usage:	OX-TRAN 2/12, 2/22 PERMATRAN 3/34, AQUATRAN 3	PERMATRAN 3/34, AQUATRAN 3

Package Testing Cartridges for Complete Packages

Specifically designed cartridges to efficiently test formed or complete packages. These purpose built cartridges improve accuracy and repeatability with out the use of tools. The revolutionary design greatly simplifies sample preparation and fixturing thus reducing labor and prep time.

Standard 80c m2 Film Test Cartridge

- Allows a wide range of packages to be tested
- Uses thin foils with for package mounting
- Perimeter clamp design to hold the test foils to the fixture
- Single-use foils eliminates need to scrape and burn off epoxy from plates
- Truseal flush ring at the perimeter ensures a leak-free seal every time increasing accuracy and repeatability



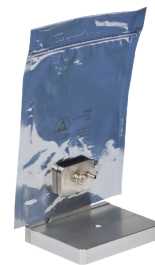
Vertical Tray Test Cartridge

- Allows wide range of tray sizes to be tested up to 8" x 12.5" (20.3cm x 31.75cm)
- Uses thin foils for package mounting
- Perimeter clamp design to hold the test foils to the fixture
- Single-use foils eliminates need to scrape and burn off epoxy from plates
- Truseal flush ring at the perimeter ensures a leak-free seal every time increasing accuracy and repeatability



Integrated Package Test Cartridge for Flexible Pouch

- Clamps through pouch for clean seal without epoxy
- Holds pouch vertical to allow wide range of sizes
- Incorporates Truseal® to minimize leakage effects
- Reusable fixture reduces cost
- Reduces sample preparation time
- Improves accuracy



Package Adapter Cartridge

- Base cartridge with vertical fittings for package test configurations
- Allows testing of complete packages, unique package types and closures



PERMEATION ANALYZERS - OPTIONAL ACCESSORIES

Testing Cartridges for Films

Integrated Package Test Cartridge K-Cup

- Mounts K-cups by flange without epoxy
- Holds up to 10 cups to test together in series
- “Blank” plates cover openings to allow testing of fewer cups on same cartridge
- Incorporates Truseal® to minimize leakage effects
- Low profile fits below conditioning rack
- Reduces sample prep time
- Reusable fixture reduces cost
- Improves test accuracy



Film Test Cartridge

- Allows testing of traditional film samples or NIST film on a package testing instrument or fixture
- Standard 50 cm² sample test area
- Incorporates Truseal® to minimize leakage effects



PackRack Package Testing Fixture

- Allows testing of two packages with film instruments using package cartridges
- Simple pneumatic clamping with Truseal
- Increase accuracy and repeatability
- Available space saver leg set to mount above instrument



Cartridge Name	Part No. (Each)	Part No. (Set of 4)
Standard 80 cm ² Package Test Cartridge	052-721	054-036
Vertical Tray Test Cartridge	052-703 Right, 052-704 Left	054-039 - 2 Left & 2 Right
Integrated Package Test Cartridge for Flexible Pouch	052-706	054-038 with punch tool
Package Adapter Cartridge	052-705	054-037
Integrated Package Test Cartridge K-Cup	054-033	054-042
Film Test Cartridge	052-737	-
Instrument Usage:	OX-TRAN 2/40, PackRack, AQUATRAN 3/40	OX-TRAN 2/40, PackRack, AQUATRAN 3/40

AMETEK MOCON offers a range of accessories to enhance the utility and efficiency of permeation testing in your laboratory. Please contact us at 763.493.6370 or info.mocon@ametek.com for questions or details about optional accessories.